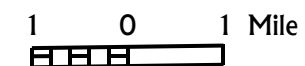


Legend

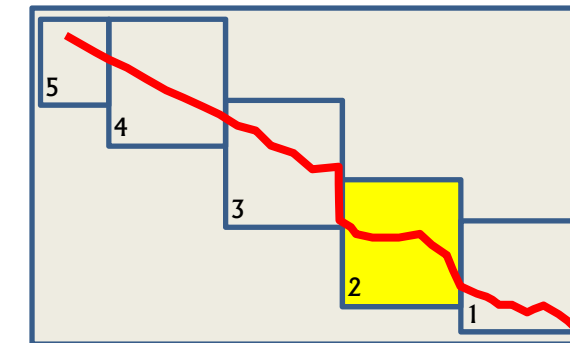
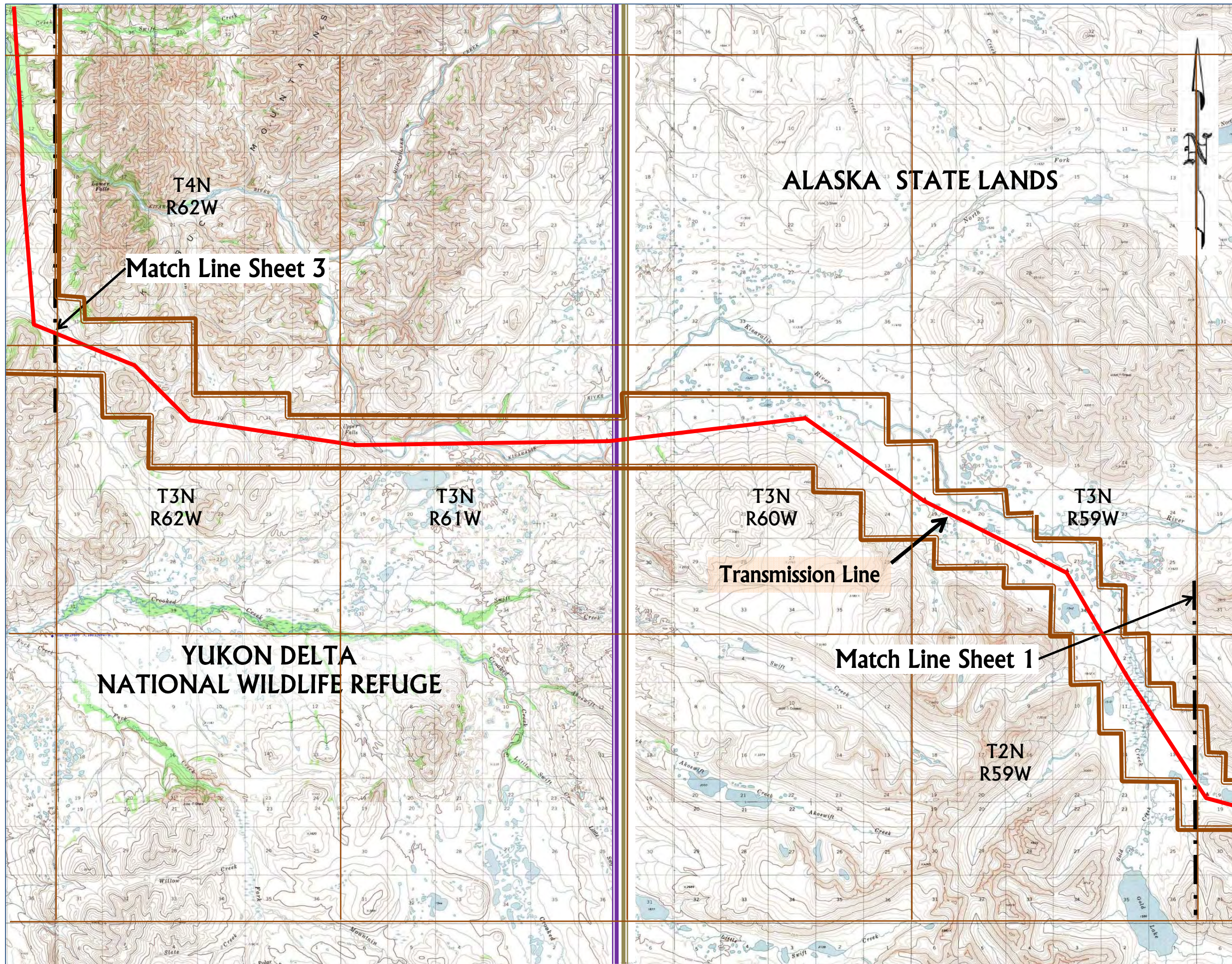
- Togiak National Wildlife Refuge
- Yukon Delta National Wildlife Refuge
- Alaska State Lands
- Wood-Tikchik State Park
- Match Line
- Transmission Line
- Project Boundary
- Alaska Native Claims Settlement Act (ANSCA) Lands



Map is based on USGS Bethel (A-1, A-2, B-1, B-2) and Taylor Mountains (A-8, B-8), ALASKA.

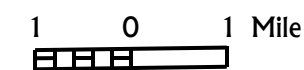
Contours are in 100 foot intervals.

Exhibit 3.3
Chikuminuk Lake
Hydroelectric Project
PROJECT BOUNDARY
Sheet 1 of 5

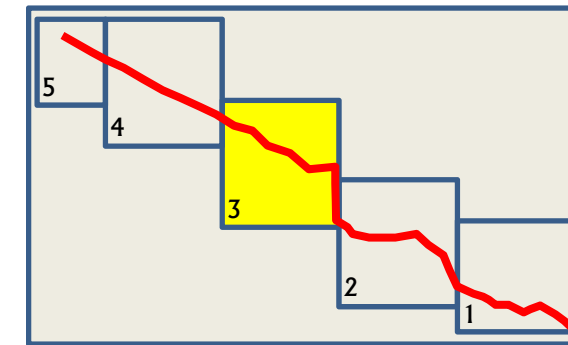
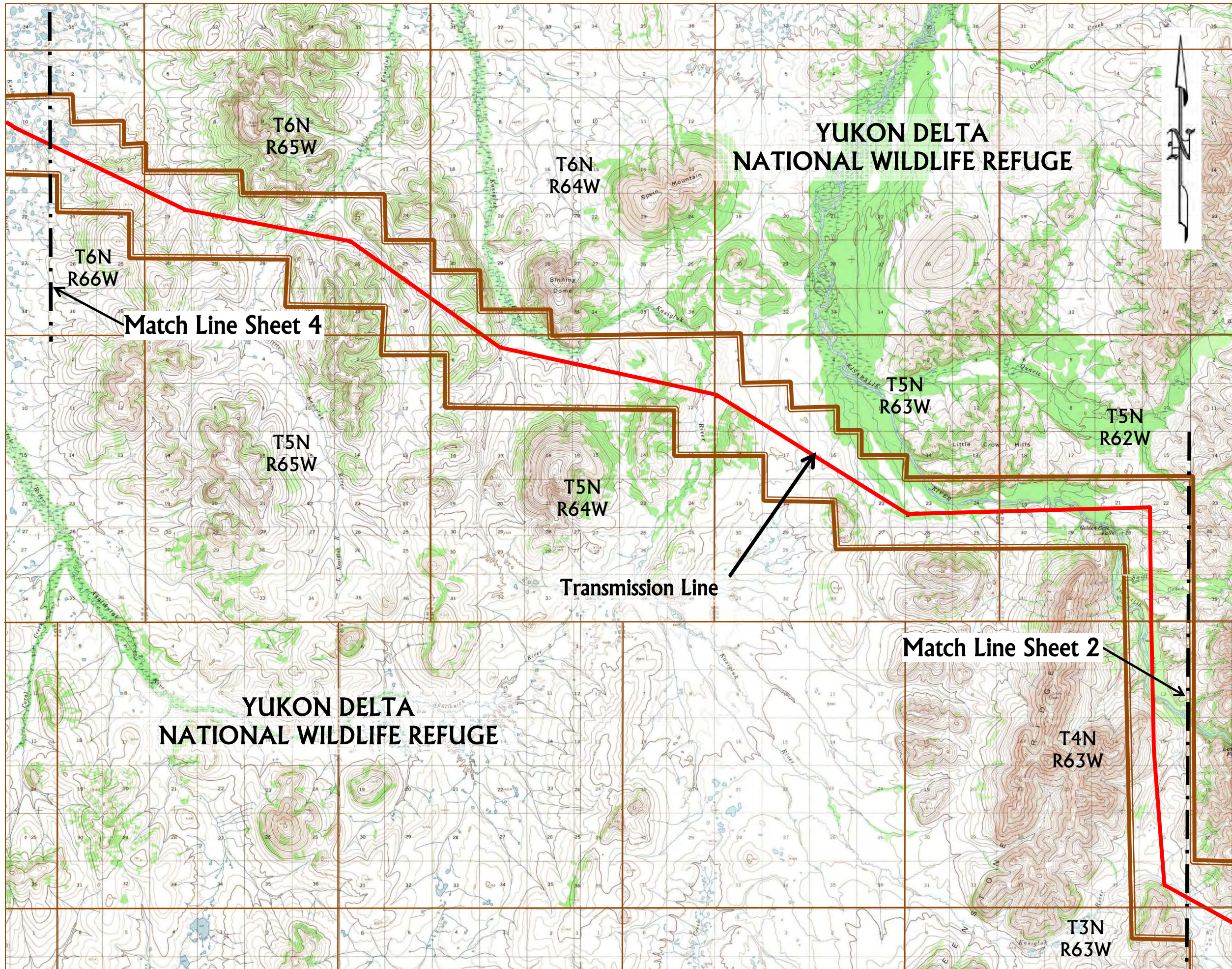


Legend

-  Togiak National Wildlife Refuge
-  Yukon Delta National Wildlife Refuge
-  Alaska State Lands
-  Wood-Tikchik State Park
-  Match Line
-  Transmission Line
-  Project Boundary
-  Alaska Native Claims Settlement Act (ANSCA) Lands

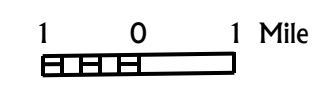


Map is based on USGS Bethel (A-2, A-3, A-4, B-2, B-3, B-4), ALASKA. Contours are in 100 foot intervals.

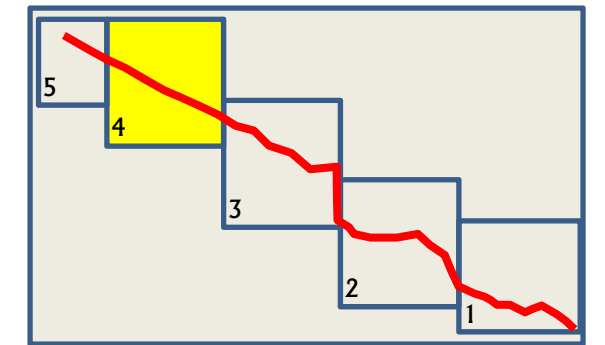
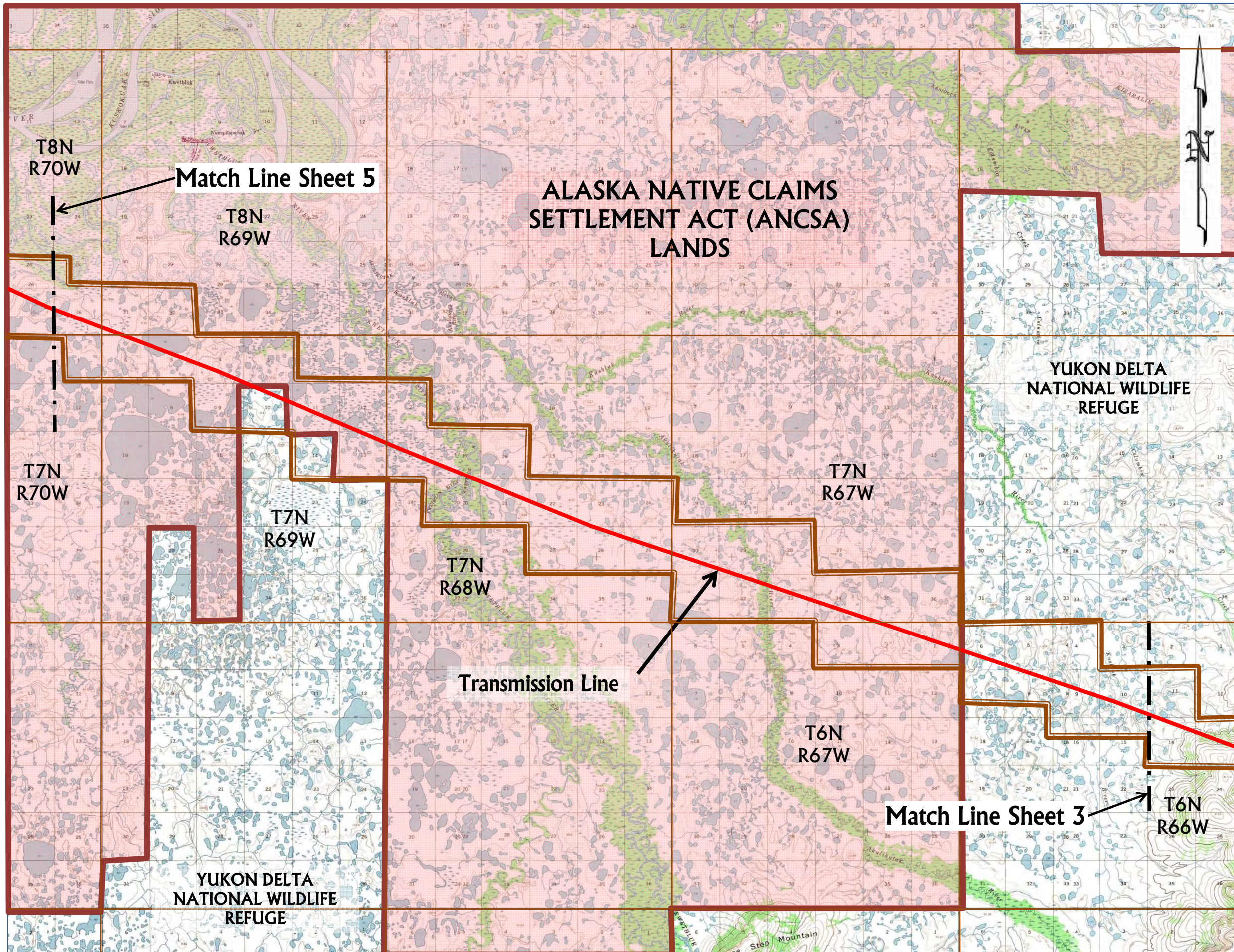


Legend

- Togiak National Wildlife Refuge
- Yukon Delta National Wildlife Refuge
- Alaska State Lands
- Wood-Tikchik State Park
- Match Line
- Transmission Line
- Project Boundary
- Alaska Native Claims Settlement Act (ANCSA) Lands

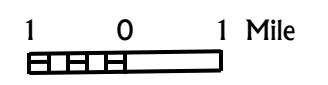


Map is based on USGS Bethel (B-3, B-4, B-5, C-3, C-4, C-5), ALASKA. Contours are in 100 foot intervals.



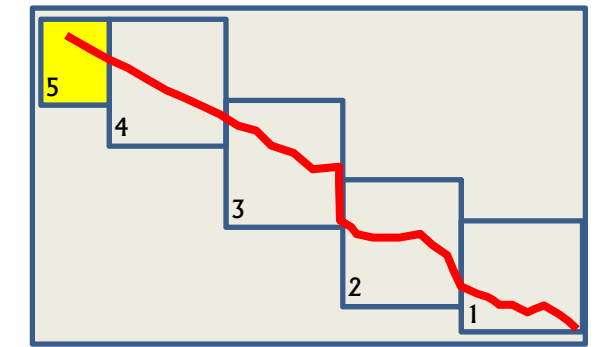
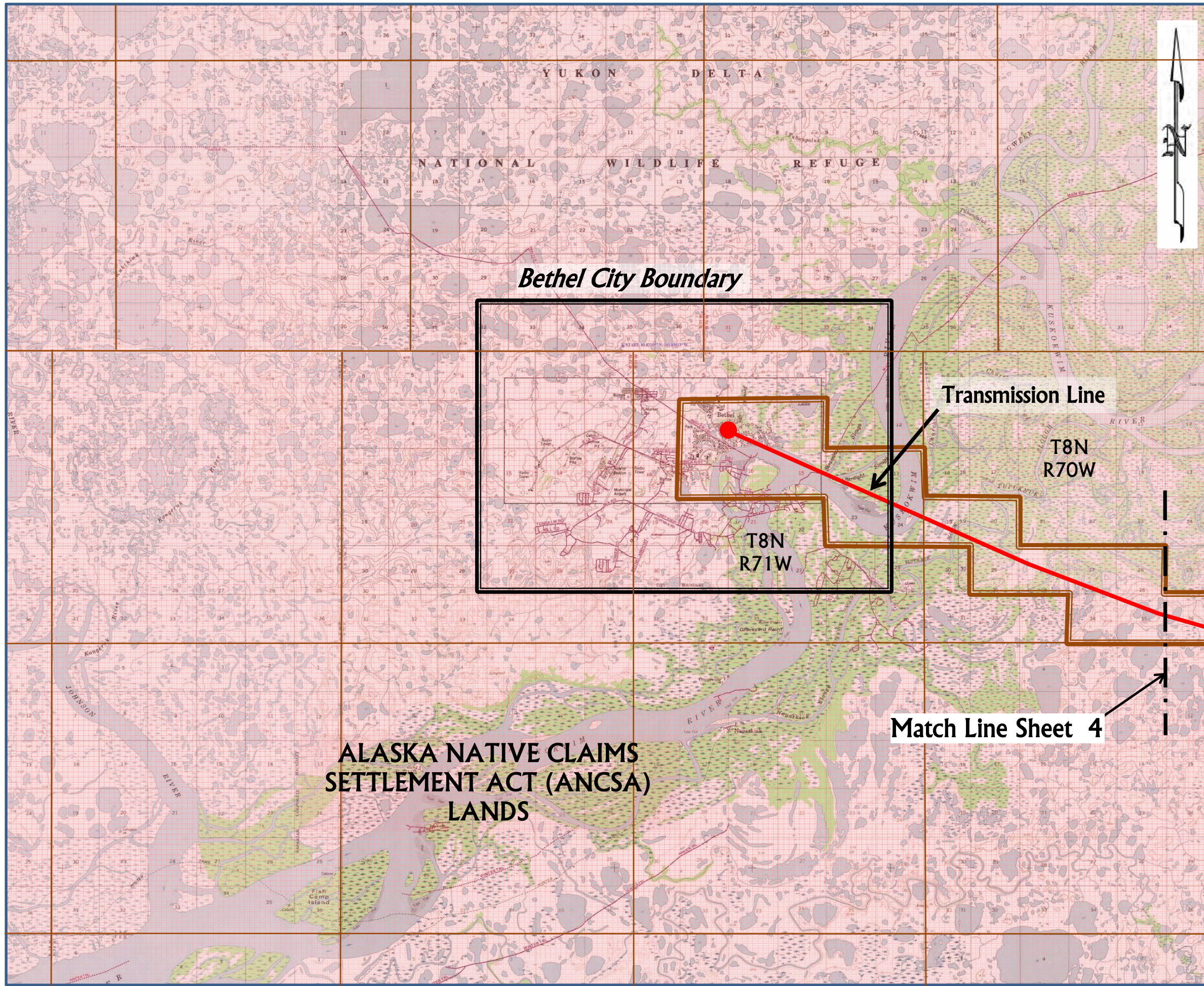
Legend

- Togiak National Wildlife Refuge
- Yukon Delta National Wildlife Refuge
- Alaska State Lands
- Wood-Tikchik State Park
- Match Line
- Transmission Line
- Project Boundary



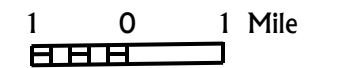
Map is based on USGS Bethel (C-5, C-6, C-7, D-5, D-6, D-7), ALASKA.
Contours are in 100 foot intervals.

Exhibit 3.3
Chikuminuk Lake
Hydroelectric Project
PROJECT BOUNDARY
Sheet 4 of 5



Legend

-  Togiak National Wildlife Refuge
-  Yukon Delta National Wildlife Refuge
-  Alaska State Lands
-  Wood-Tikchik State Park
-  Match Line
-  Transmission Line
-  Project Boundary
-  Alaska Native Claims Settlement Act (ANCSA) Lands



Map is based on USGS Bethel (C-7, C-8, D-7, D-8), Baird Inlet (C-1, D-1), ALASKA. Contours are in 100 foot intervals.